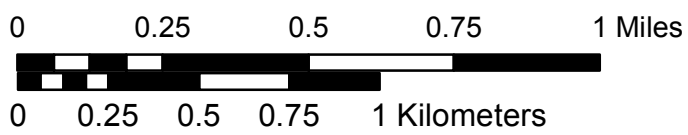
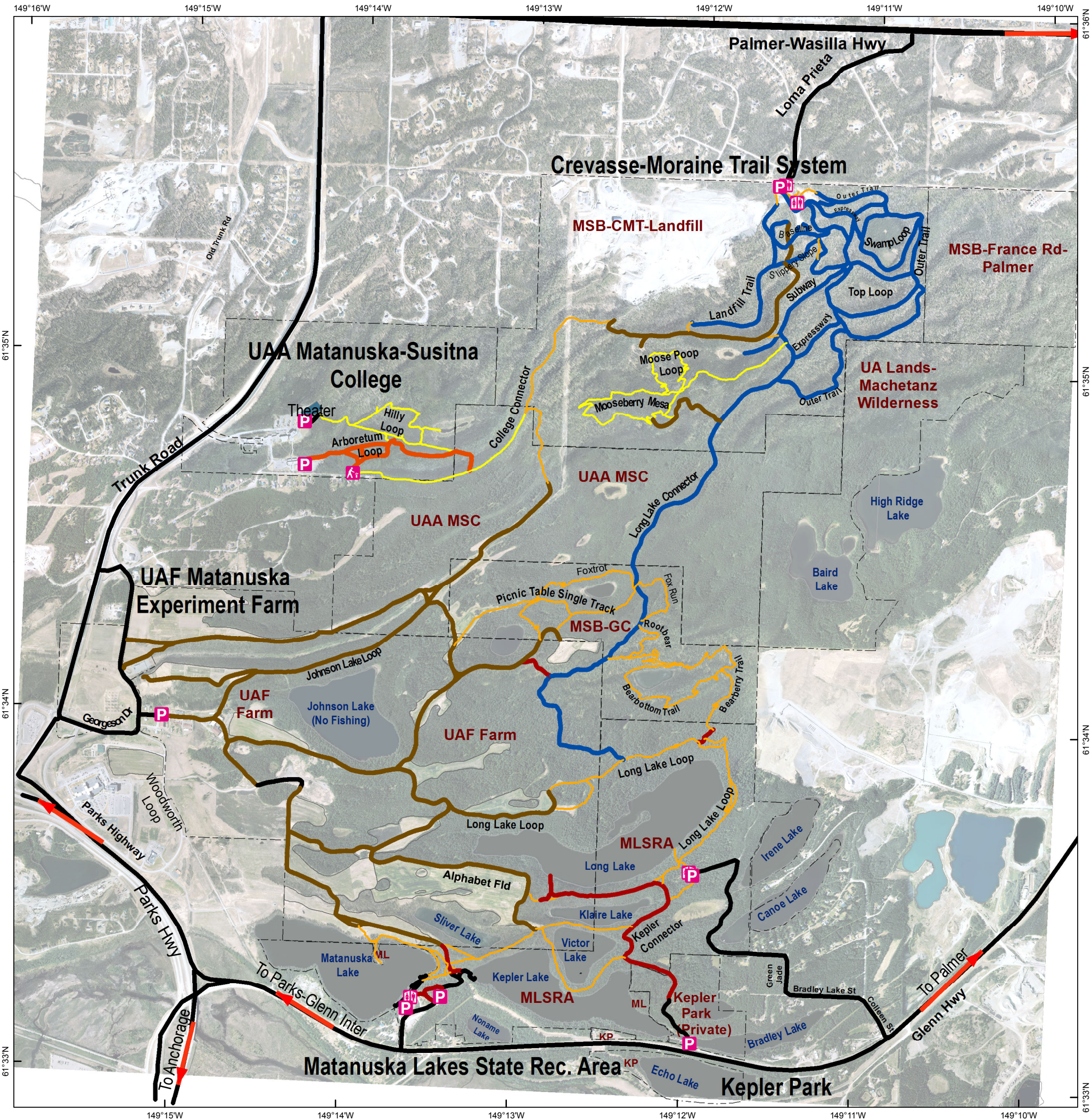


# Matanuska Greenbelt Trails 2016 - Draft 5.1\_user



- Legend**
- Trail Tread**
- Hardened-asphalt, gravel
  - Dirt roads
  - Groomable ski
  - Wide track
  - Wide track-no horses
  - Single track
  - Single track-no horses



Crevasse-Moraine Trail System (MSB-CMT-Landfill) - Turn south (left coming from Palmer, right coming from Wasilla) on Loma Prieta off Palmer-Wasilla Highway . Managed by Matanuska-Susitna Borough, which also manages Greenbelt Central (MSB-GC). MSB-France Rd-Palmer is presently leased by Palmer, but could be used for trails in future.

Matanuska Lakes State Recreation Area (MLSRA) - Turn north (left coming from Anchorage, right coming from Palmer) off Glenn Highway about 0.5 mi east of Glenn - Parks interchange. Managed by Alaska Division of Parks and Outdoor Recreation.

University of Alaska Anchorage Matanuska-Susitna College (UAA-MSC) - Access parking near Glenn Massay Theater or behind Snodgrass Hall. Please respect the privilege of being able to access their non-motorized trails. Horses are not allowed.

University of Alaska Fairbanks Matanuska Experiment Farm (UAF Farm) - Active research farm. Please respect their fields and on-going research. Please yield to farm equipment and operations. The area is non-motorized for general public. Please respect the privilege of using these areas and stay on trails.

Kepler Park is a private park in southeast corner of greenbelt that encourages non-motorized access. Please check signs at trailhead for more details on access.

Not for navigation or legal purposes.  
 Google road map: <http://goo.gl/maps/RASl>